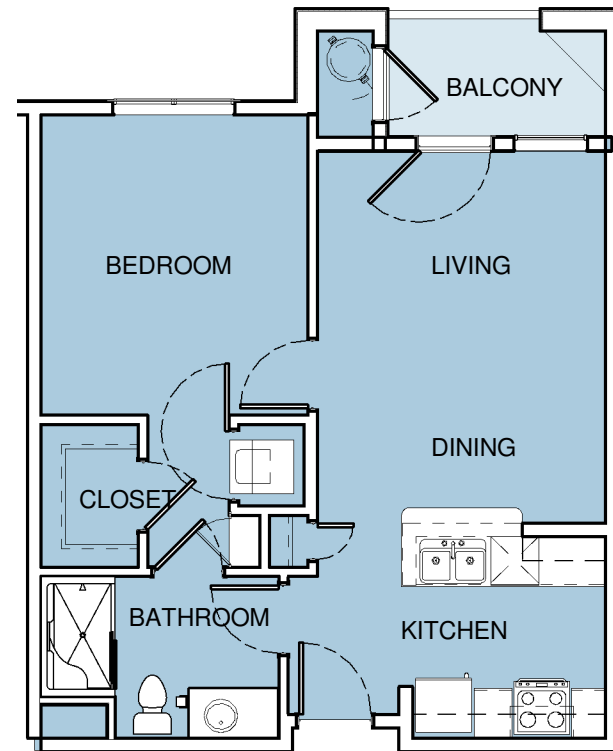


UNIT A - TYP. FLOOR PLAN (TYPE A) 605 SF

1/8" = 1'-0"



UNIT A - TYP. FLOOR PLAN (TYPE B) 605 SF

1/8" = 1'-0"



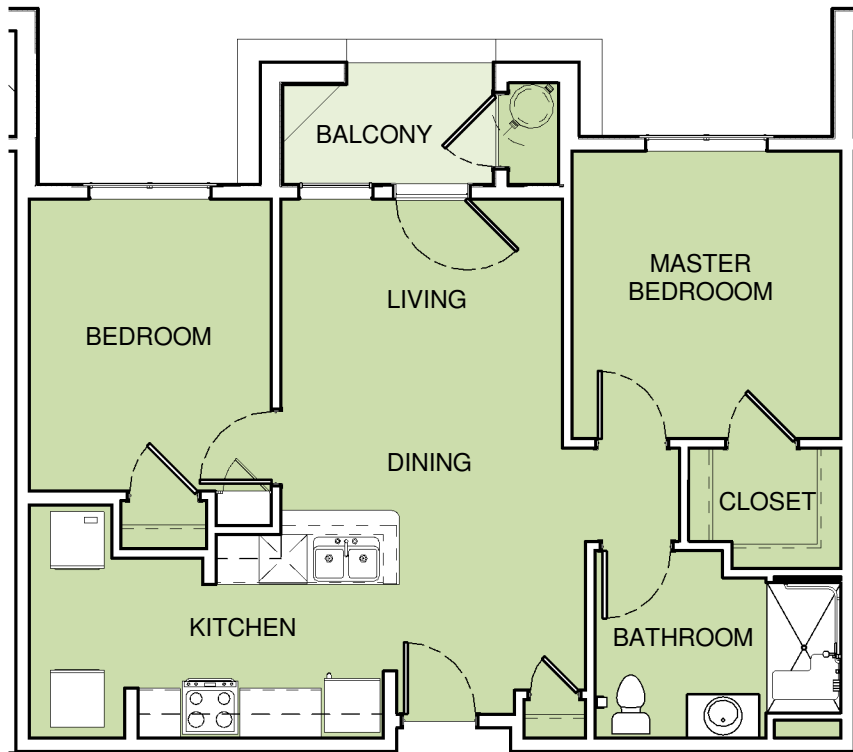
PWN Architects and Planners, Inc.

6560 Greenwood Plaza Blvd., Suite 130, Englewood, Colorado 80111 Phone: (303) 649-9880 Fax: (303) 649-9870 www.pwnarchitects.com

Auburn Ridge

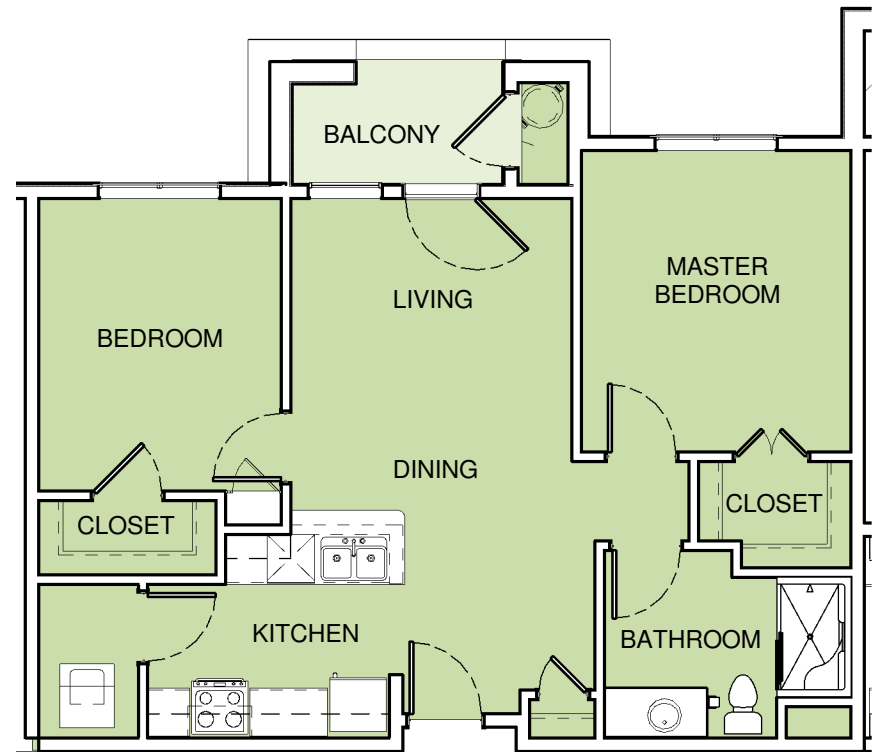
SENIOR APARTMENTS castle rock, colorado





UNIT B - TYP. FLOOR PLAN (TYPE A) 795 SF

1/8" = 1'-0"



UNIT B - TYP. FLOOR PLAN (TYPE B) 795 SF

1/8" = 1'-0"

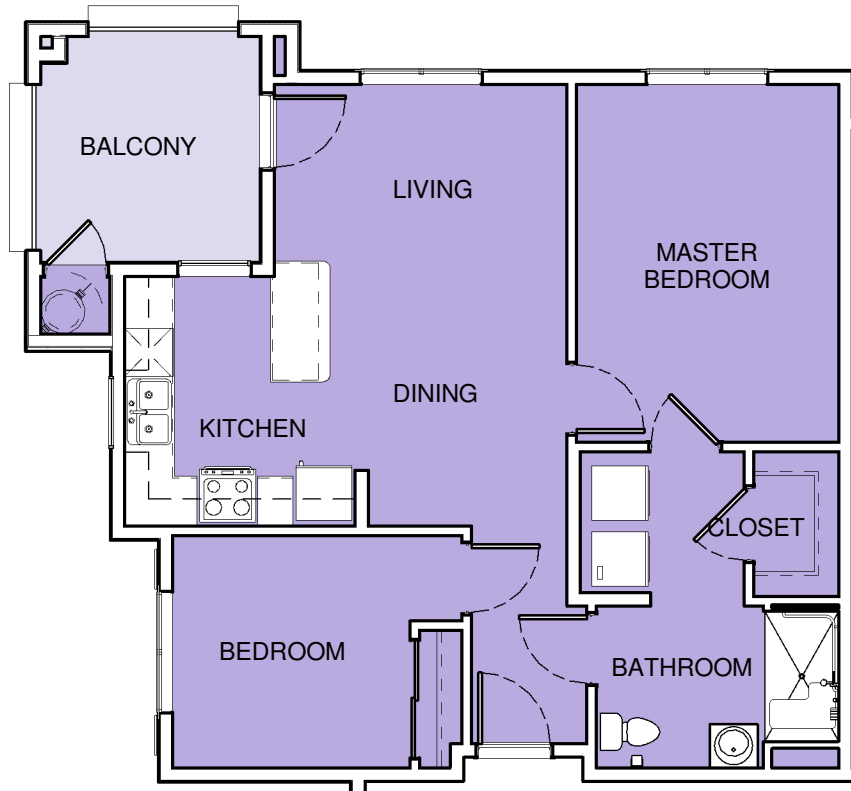


PWN Architects and Planners, Inc.

6560 Greenwood Plaza Blvd., Suite 130, Englewood, Colorado 80111 Phone: (303) 649-9880 Fax: (303) 649-9870 www.pwnarchitects.com

Auburn Ridge
 SENIOR APARTMENTS castle rock, colorado





UNIT C - TYP. FLOOR PLAN (TYPE A) 786 SF

1/8" = 1'-0"



UNIT C - TYP. FLOOR PLAN (TYPE B) 786 SF

1/8" = 1'-0"

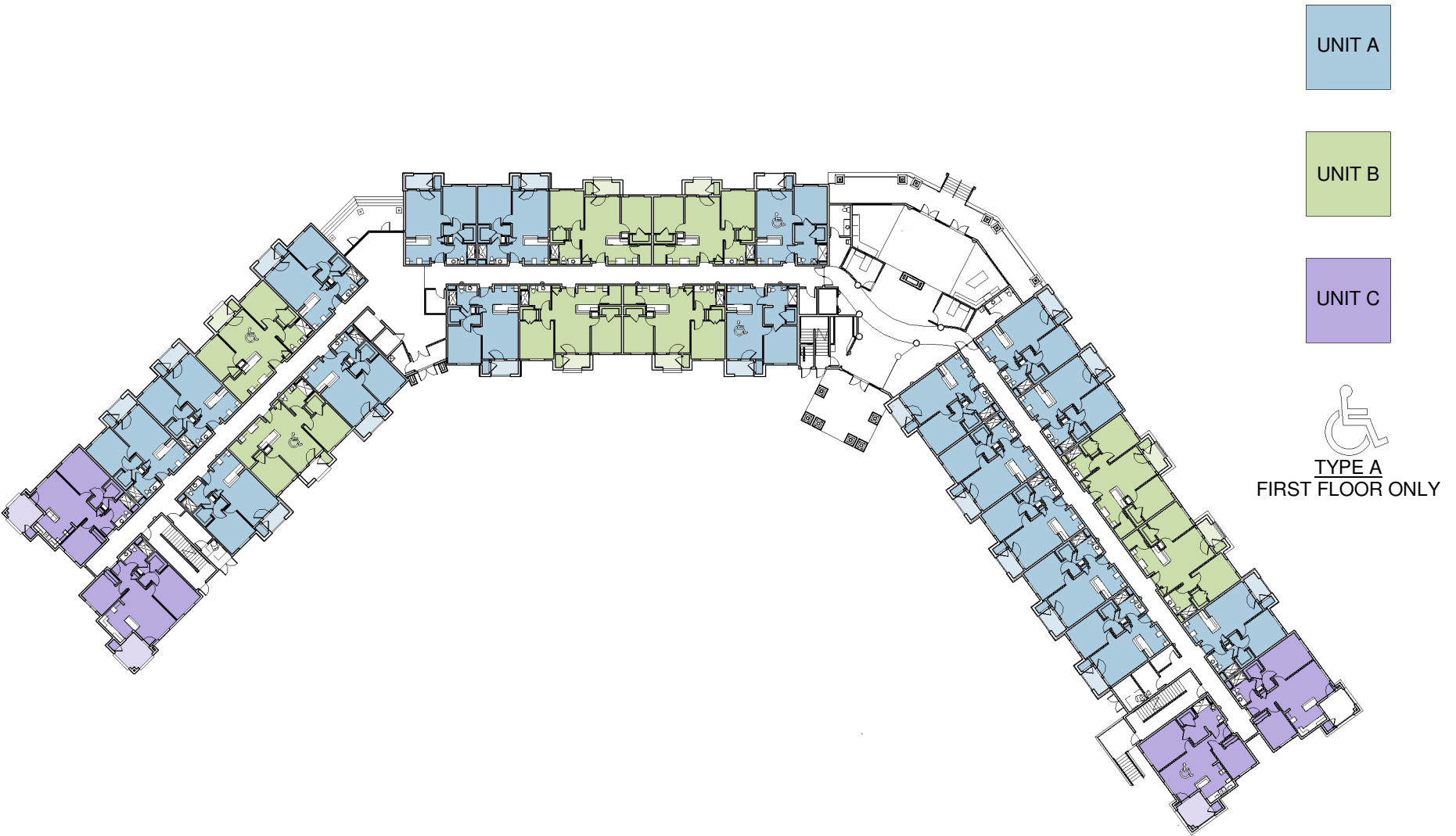


PWN Architects and Planners, Inc.

6560 Greenwood Plaza Blvd., Suite 130, Englewood, Colorado 80111 Phone: (303) 649-9880 Fax: (303) 649-9870 www.pwnarchitects.com

Auburn Ridge
 SENIOR APARTMENTS castle rock, colorado





UNIT KEY PLAN (TYPICAL)

1" = 50'-0"



PWN Architects and Planners, Inc.

6560 Greenwood Plaza Blvd., Suite 130, Englewood, Colorado 80111 Phone: (303) 649-9880 Fax: (303) 649-9870 www.pwnarchitects.com

Auburn Ridge
 SENIOR APARTMENTS castle rock, colorado

